



GUIDE FOR UNIMATE WEB AUTHENTICATION

VERSION 1.0

Trademarks

The data and information contained in this document cannot be altered without the express written permission of SecuTech Solution Inc. No part of this document can be reproduced or transmitted for any purpose whatsoever, either by electronic or mechanical means.

The general terms of trade of SecuTech Solution Inc. apply. Diverging agreements must be made in writing.

Copyright © SecuTech Solution Inc. All rights reserved.

WINDOWS is a registered trademark of Microsoft Corporation.

The WINDOWS-logo is a registered trademark ^(TM) of Microsoft Corporation.

Software License

The software and the enclosed documentation are copyright-protected. By installing the software, you agree to the conditions of the licensing agreement.

Licensing Agreement

SecuTech Solution Inc. (SecuTech for short) gives the buyer the simple, exclusive and non-transferable licensing right to use the software on one individual computer or networked computer system (LAN). Copying and any other form of reproduction of the software in full or in part as well as mixing and linking it with others is prohibited. The buyer is authorized to make one single copy of the software as backup. SecuTech reserves the right to change or improve the software without notice or to replace it with a new development. SecuTech is not obliged to inform the buyer of changes, improvements or new developments or to make these available to him. A legally binding promise of certain qualities is not given. SecuTech is not responsible for damage unless it is the result of deliberate action or negligence on the part of SecuTech or its aids and assistants. SecuTech accepts no responsibility of any kind for indirect, accompanying or subsequent damage.

Contact Information

HTTP: www.eSecuTech.com

E-Mail: Sales@eSecuTech.com

Please Email any comments, suggestions or questions regarding this document or our products to us at: Sales@eSecuTech.com

Version	Date
1.0	2015.11

FIPS



UniMate USB PKI Token is FIPS 140-2 level 2 Certified.

CE Attestation of Conformity



UniMate is in conformity with the protection requirements of CE Directives 89/336/EEC Amending Directive 92/31/EEC. UniMate satisfies the limits and verifying methods: EN55022/CISPR 22 Class B, EN55024: 1998.

FCC Standard



This device is in conformance with Part 15 of the FCC Rules and Regulation for Information Technology Equipment.

Operation of this product is subject to the following two conditions: (1) this device may not cause harmful interference, and (2) this device must accept any interference received, including interference that may cause undesired operation.



The equipment of UniMate is USB based.

Conformity to ISO 9001:2000



The Quality System of SecuTech Solution Inc., including its implementation, meets the requirements of the standard ISO 9001:2000

ROHS



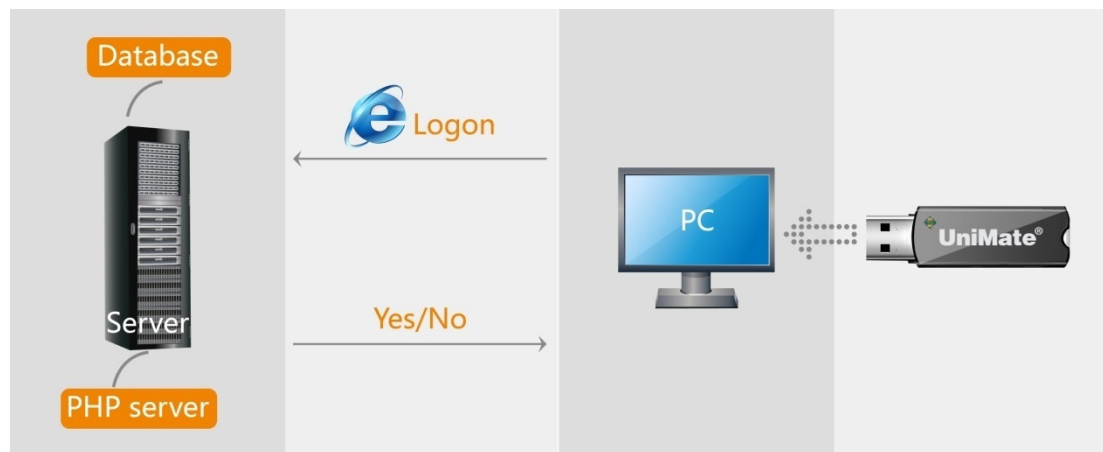
All UniMate products are environmental friendly with ROHS certificates.

Table of Contents

OVERVIEW	1
Chapter 1: Server Configuration	2
1.1 Server Setup	3
1.2 Copy PHP scripts	5
1.3 Write Server Settings	5
Chapter 2: Initialize UniMate	6
Chapter 3: Client Daemon Tool	8
3.1 Launching UniMate Daemon tool	8
3.2 Assigning a browser for UniMate	9
Chapter 4: User Management	10

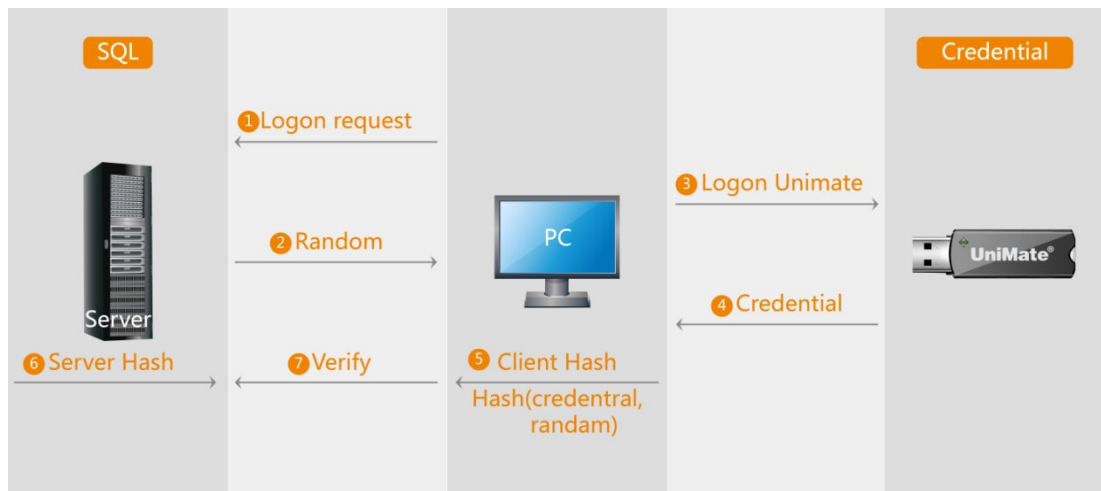
Overview

Our UniMate products can be used for Web Authentication, persons could be allowed to access a special web with UniMate. This Guide will guide you to setup Server and to use client tools for Web Authentication. UniMate Init tool is a graphical user interface (GUI) tool that helps software developer to set up UniMate parameters for web users. UniMate Daemon Tool is a GUI application running on the user's computer. This tool will be distributed together with the UniMate device to users. It provides many useful functions including a logon interface, System settings and change user passwords.



Chapter 1: Server Configuration

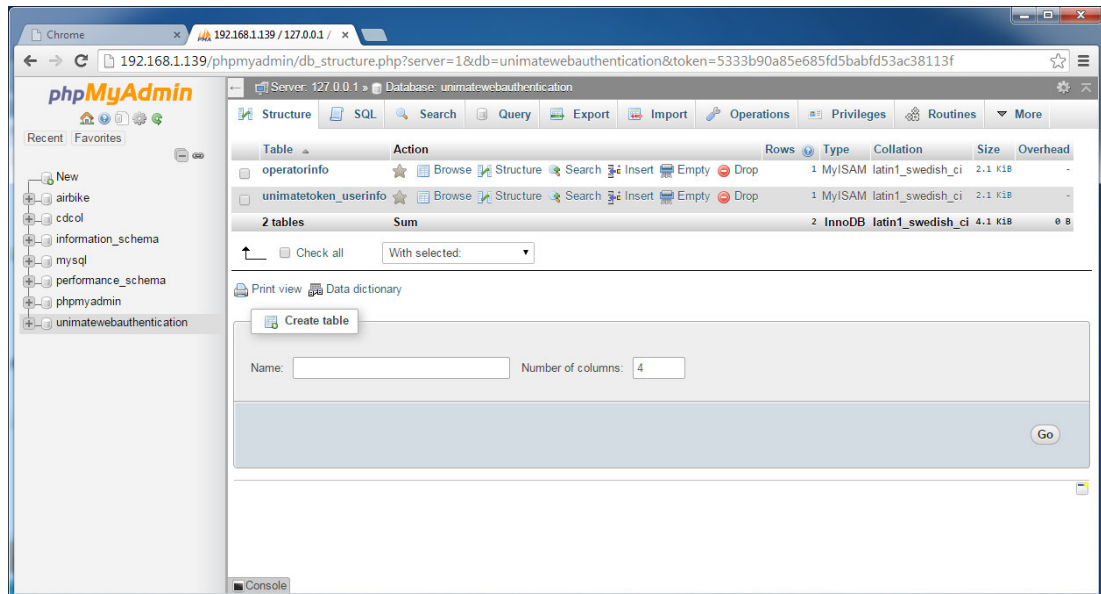
Please make sure your Server is installed correctly and it works well before using UniMate for Web Authentication.



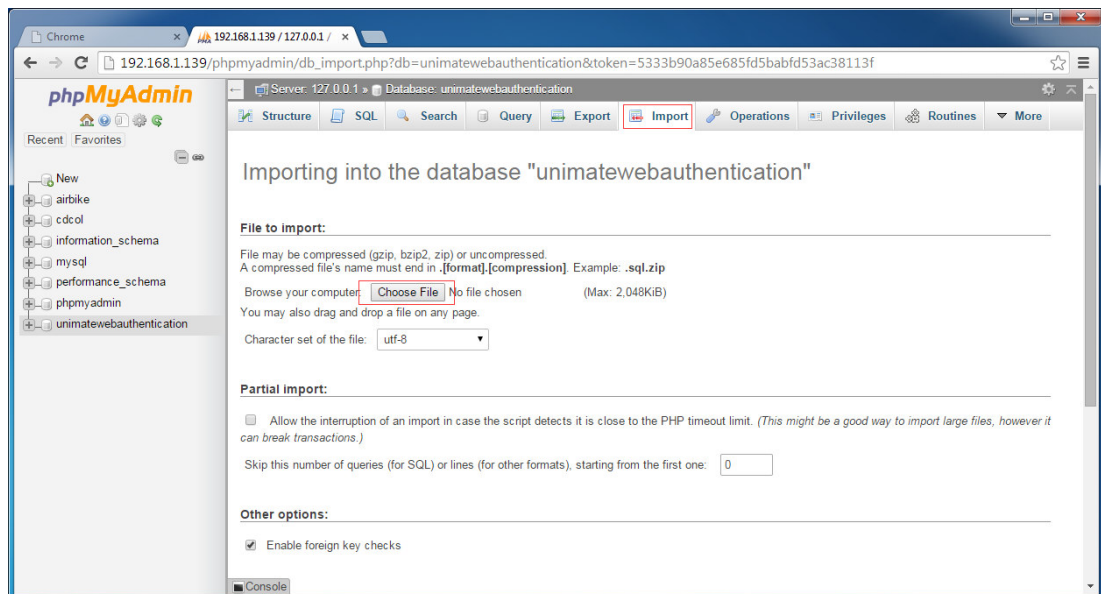
The principle

1.1 Server Setup

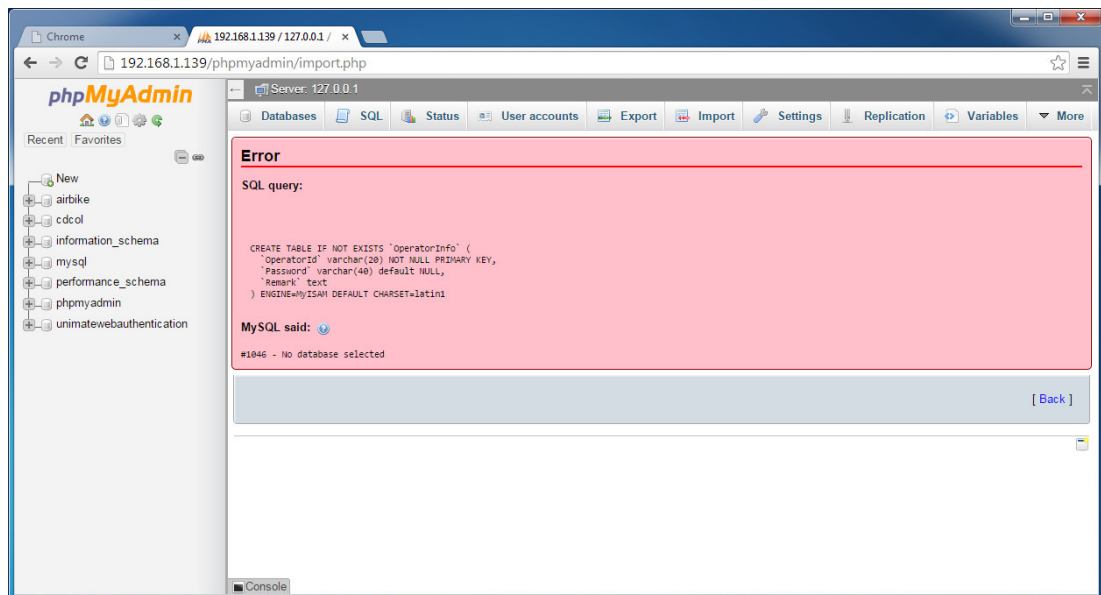
1. Import a new SQL. Firstly, logon Server as a PHP admin.



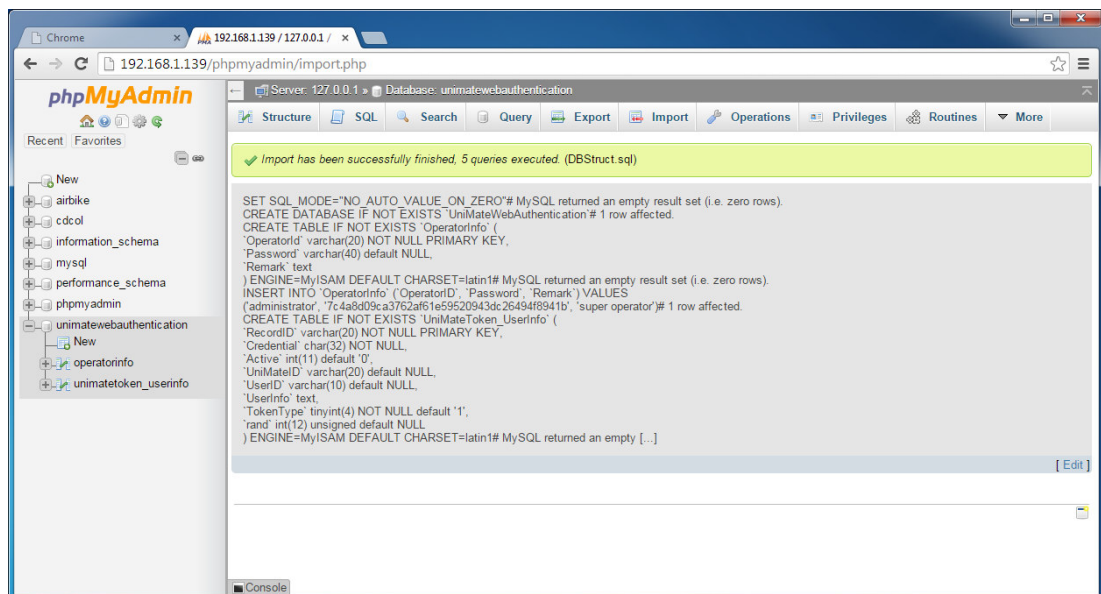
2. Click on "Import" on the top menu bar. And choose SQL file to import, then click on "go".



3. You will get an error as the screenshot below. Do not worry, find the SQL you import just now on the left list, here is Unimateauthentication. Click on it, then import SQL again accord to step 2.



4. This time, import SQL successfully.



1.2 Copy PHP scripts

Copy all the scripts in server folder to the http root folder in your Server.

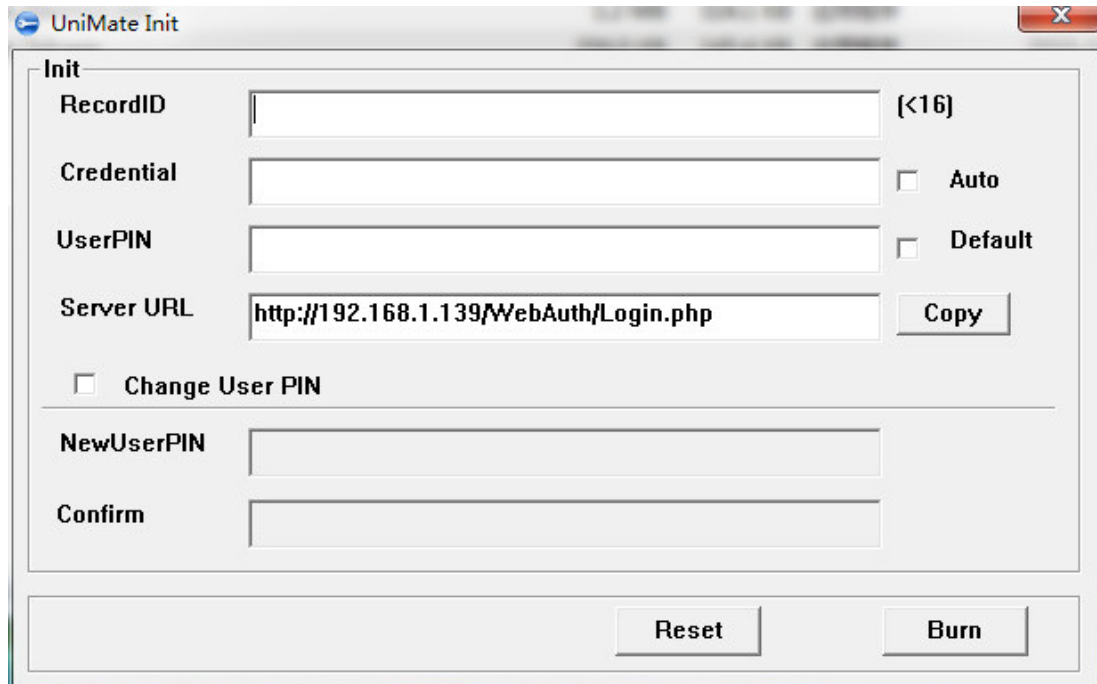
1.3 Write Server Settings

Open the config file in your server. You can change the database user name, database name, password, port and host by changing the config file.

images	11/27/2015 12:18 ...	File folder	
js	11/27/2015 12:18 ...	File folder	
SQL	11/27/2015 12:18 ...	File folder	
config	11/27/2015 11:04 ...	PHP File	1 KB
func_core	11/27/2015 11:04 ...	PHP File	3 KB
index	11/27/2015 11:04 ...	PHP File	3 KB
Login	11/27/2015 11:04 ...	PHP File	6 KB
mysql_interface	11/27/2015 11:04 ...	PHP File	2 KB
update	11/27/2015 11:04 ...	PHP File	2 KB
userinfo_manage	11/27/2015 11:04 ...	PHP File	5 KB

Chapter 2: Initialize UniMate

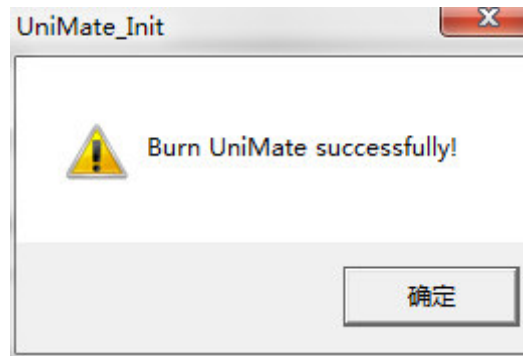
Please select the right UniMate init application according to your web design language, so far UniMate can support ASP, ASP.NET and PHP. Please launch the UniMate Init application.



A UniMate Init window will appear as above:

- Enter UserID (less than 16 Char).
- Check the Auto check box if you want to let system generate credentials automatically, or you have to define one by yourself.
- Enter UserPIN used for users to logon their UniMate device or check Default if the UserPIN is the factory default (user) . The default pin is 11111111.
- Server URL specifies where your website is available.

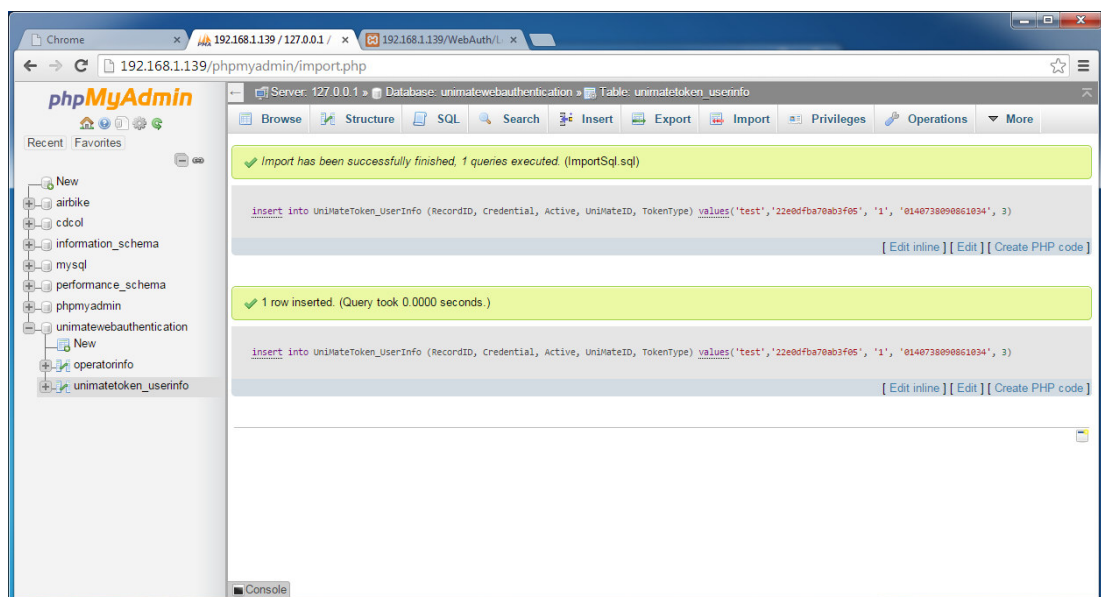
UniMate Init tool can be used to change a Users PIN as well. To achieve this, please check Change User PIN, and enter the New User PIN twice to confirm. Click the Burn button to start burning your settings into your UniMate.



You have burnt your UniMate successfully if you see the above pop up window. An insert SQL command line will be added into the ImportSql.sql file which is in the same folder where UniMate Init is located.

Open this file with a text editor and you can add the new records into the SQL database used to store user information.

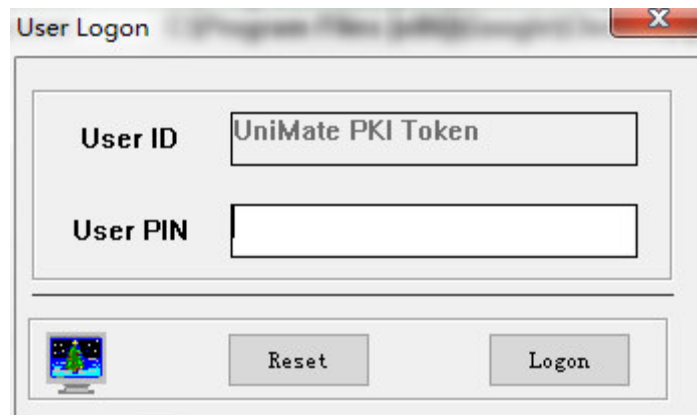
Please remember to Import the ImportSql to server.



Chapter 3: Client Daemon Tool

3.1 Launching UniMate Daemon tool

Please launch the UniMate Daemon Tool application.

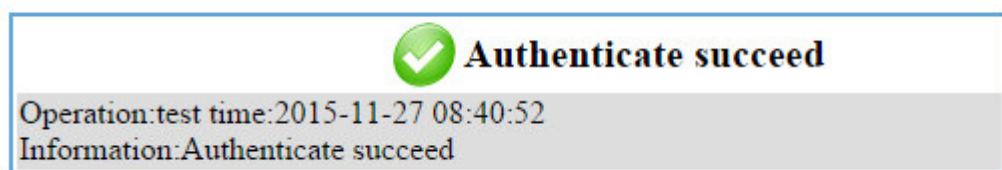


A User Logon window will appear, please enter the user PIN.

NOTE!

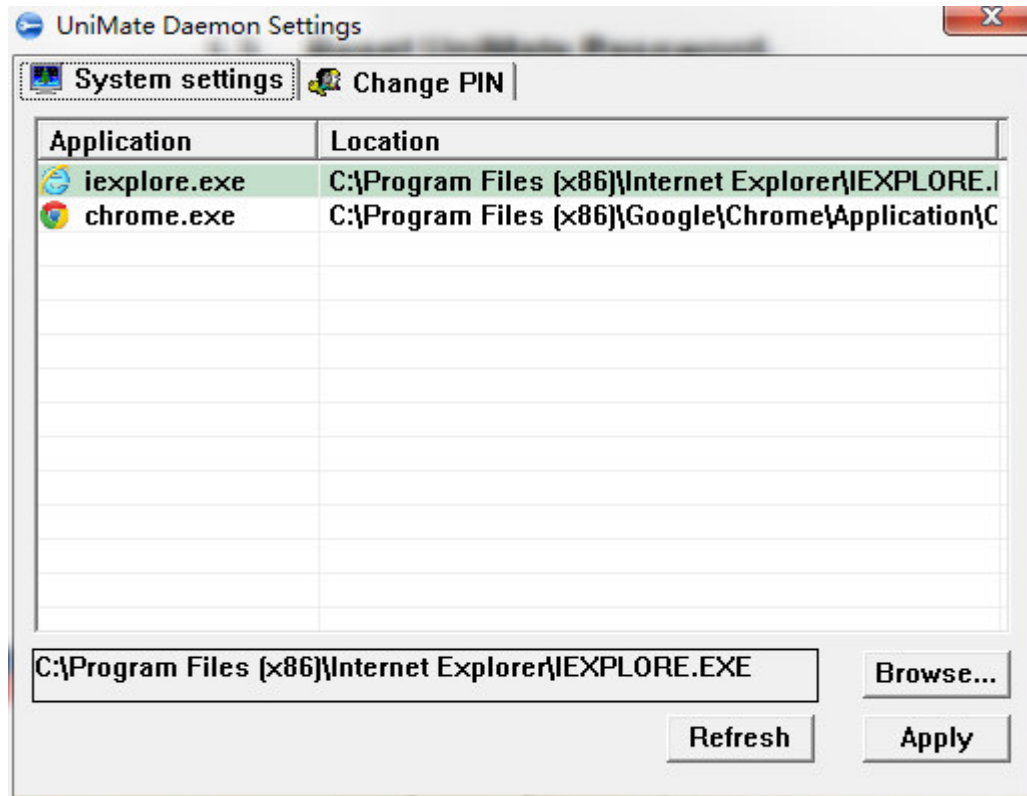
The User ID displayed in the above window is the UniMate ID.

If have you logged onto the UniMate successfully, a web will pop up as below, it means web authenticate succeed.



3.2 Assigning a browser for UniMate

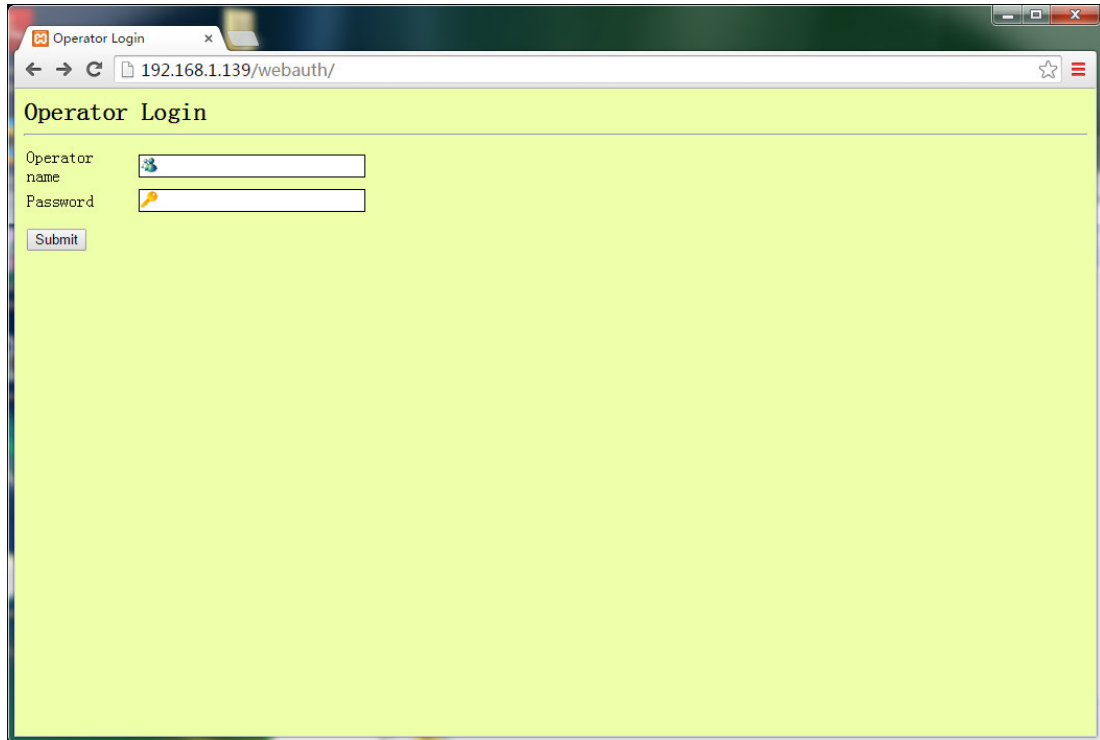
Please enter the settings window by clicking on the UniMate task bar icon.



Please select the browser you would like to use, and then click Apply to execute.

Chapter 4: User Management

You can check the user information by login as administrator. The default operator name is administrator, and default password is 123456.

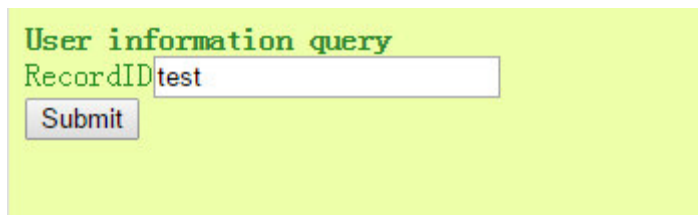


Operator Login

Operator name

Password

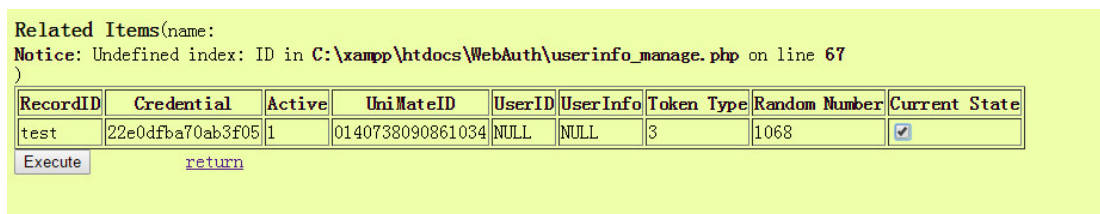
Click on Submit.



User information query

RecordID

Type in RecordID, and click on Submit to check.



Related Items(name:)

Notice: Undefined index: ID in C:\xampp\htdocs\WebAuth\userinfo_manage.php on line 67

RecordID	Credential	Active	UniMateID	UserID	UserInfo	Token Type	Random Number	Current State
test	22e0dfba70ab3f05	1	0140738090861034	NULL	NULL	3	1068	<input checked="" type="checkbox"/>

[return](#)

Follow us!


[Twitter](#)

[Facebook](#)

[Youtube](#)

[Linked in](#)


About SecuTech

SecuTech Solution Inc. is a company specializing in data protection and strong authentication, providing total customer satisfaction in security systems & services for banks, financial institutions & other industries. Having extensive and in-depth experience within the information security market, SecuTech has drawn upon this experience to utilize today's cutting-edge technologies, enables enterprises, financial institutions, and government to safely adopt the economic benefits of mobile and cloud computing that are effective against increasingly sophisticated cyber attacks.

SecuTech

www.eSecuTech.com SecuTech Solution Inc.

North America

1250 Boulevard René-Lévesque Ouest, #2200,
Montreal, QC, H3B 4W8,
Canada
T: +1 -888-259-5825
F: +1 -888-259-5825 ext.0
E: INFO@eSecuTech.com

China

Level 12, #67 Bei Si Huan
Xi Lu,
Beijing, China, 100080
T: +8610-8288 8834
F: +8610-8288 8834
E: CN@eSecuTech.com

APAC

Suite 5.14, 32 Delhi Rd,
North Ryde,
NSW, 2113, Australia
T: 00612-9888 6185
F: 00612-9888 6185
E: AUS@eSecuTech.com

EMEA

4 Cours Bayard 69002
Lyon, France
T: +33-042-600-2810
F: +33-042-600-2810
M: +33-060-939 6463
E: Europe@eSecuTech.com

©Copyright 2012 SecuTech Solution Inc. All rights reserved. Reproduction in whole or in part without written permission from SecuTech is prohibited. SecuTech UniMate and the SecuTech logo are trademarks of SecuTech Inc. Windows and all other trademarks are properties of their respective owners. Features and specifications are subject to change without notice.